

1 Scientific justification

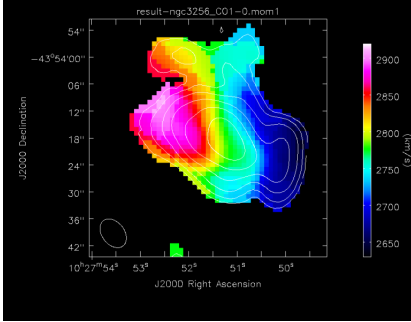


Figure 1: *The CO(1-0) velocity field of NGC 3256, with contours of the total line emission map overlaid (ALMA Science Verification Data).*

Table 1: *Here we show the continuum sensitivity required per band.*

Frequency (GHz)	Sensitivity (mJy)
100	0.01
300	0.10

2 Description of observations

3 References

- [1] Author1 et al. year, journal, vol, page
- [2] Author2 et al. year, journal, vol, page